



SYKES

PUMP SPECIFICATION SHEET

► SW310-380-PR —



Built Tough

SEWAGE & WASTE PR



Sewage &
Waste Water



Rental



Construction
& Civil



Industrial

► HEAVY DUTY

Automatic self-priming
single stage end
suction pump

► SOLIDS HANDLING

Large solids capacity
while maintaining
hydraulic efficiencies

► CORROSION RESISTANT

Stainless steel 316
(CF8M) internals
as standard

TECHNICAL DATA

DESIGN DETAILS

Auto self-priming, centrifugal single stage, end-suction, 3 vane semi-open impeller.

| PRODUCT SPECIFICATIONS | |
|----------------------------|----------------------------|
| Suction Flange | 300mm [12"] |
| Delivery Flange | 300mm [12"] |
| Solids Handling | 110mm [4.33"] |
| Maximum Head | 57m [187ft] |
| Maximum Flow | 440L/sec [6,974 USgal/min] |
| Engine Type | CAT-C9.3B-230 |
| Engine Adaptor | SAE #2 |
| Shaft Diameter* | 68mm [2.68"] |
| Fuel Rate @ BEP 1,600rpm** | 43.9L/hr [11.6 USgal/hr] |
| Fuel Tank Capacity | 1,800L [476 USgal] |

* The nominated shaft diameter is the critical working diameter of the shaft, used for calculation of the shaft stiffness ratio L3/D4.
** Based on standard engine brake specific fuel consumption.

PREMIUM RANGE (PR) INCLUSIONS

- Structural Steel base.
- Galvanised steel, two-point lifting frame complete with engine canopy.
- Manual diesel fuel fill (lockable).
- Pump and engine control panel with emergency stop as standard.
- Heavy duty battery with battery box enclosure.
- Vacuum (suction inlet) and Pressure (discharge outlet) gauges.
- Pump operating range sign for optimum pump life and reliability.
- Galvanised steel sled, complete with tyne pockets and tie down points for transportation.
- Safety inclusions such as heat shields, work lights, lockable battery isolator and fire extinguisher.
- Rear discharge pipe work, complete with geared butterfly valve.

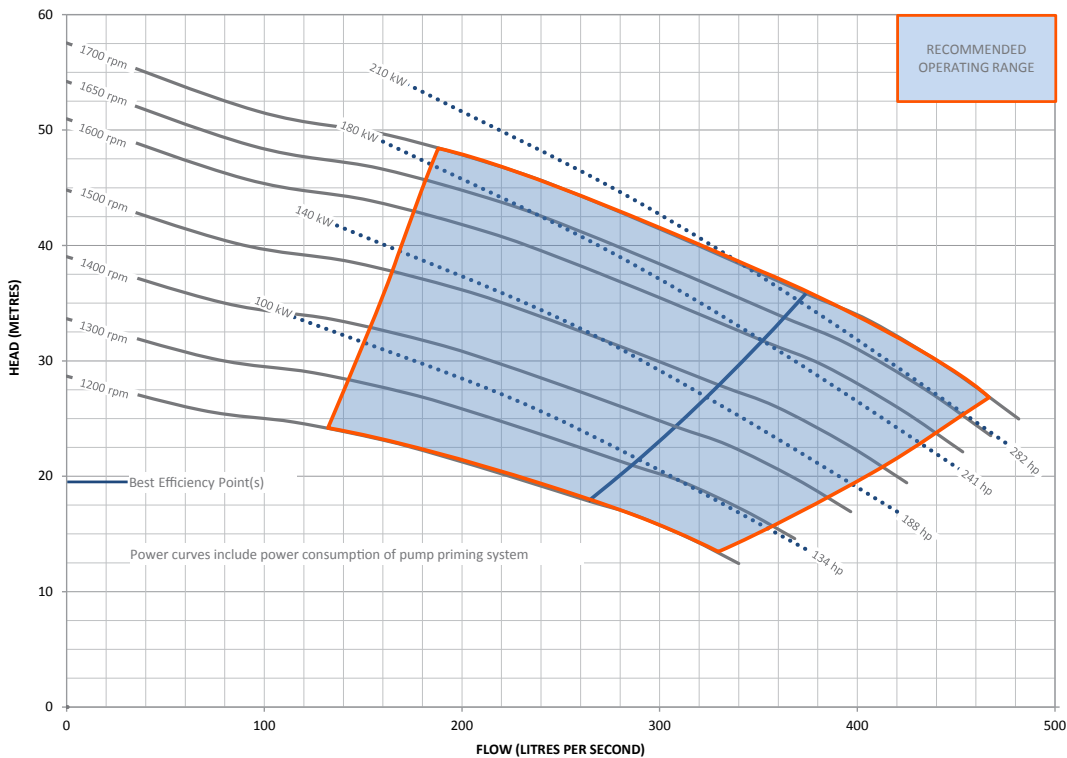
| MATERIALS OF CONSTRUCTION | | | | | |
|---------------------------|--------------------------------------|--------------------|------|----------|------|
| PART | MATERIAL | MATERIAL STANDARDS | | | |
| | | GRADE | AS | GRADE | ASTM |
| Tee Piece | SG Iron | 400/12 | 1831 | 65-45-12 | A536 |
| Front Adaptor Plate | SG Iron | 400/12 | 1831 | 65-45-12 | A536 |
| Pump Casing (Volute) | SG Iron | 400/12 | 1831 | 65-45-12 | A536 |
| Front Wear Plate | Stainless | 316/H6B | 2074 | CF8M | A351 |
| Impeller | Stainless | 316/H6B | 2074 | CF8M | A351 |
| Rear Wear Plate | Stainless | 316/H6B | 2074 | CF8M | A351 |
| Rear Adaptor Plate | SG Iron | 400/12 | 1831 | 65-45-12 | A536 |
| Pump Shaft | Stainless | 431 | 2074 | 98b-431 | A276 |
| Bearing Bracket | SG Iron | 400/12 | 1831 | 65-45-12 | A536 |
| Bearing Covers | SG Iron | 400/12 | 1831 | 65-45-12 | A536 |
| Mechanical Seal† | Multi-spring balanced component type | | | | |

† Multi-spring balanced component type mechanical seal complete with oil lubrication. Seal faces are silicon carbide vs. silicon carbide

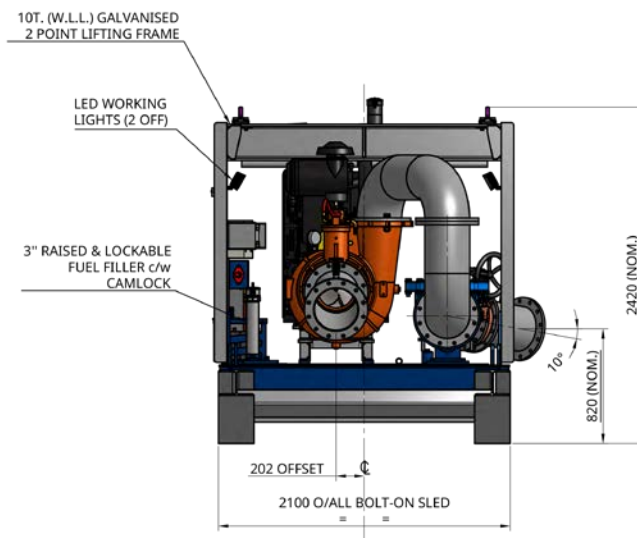
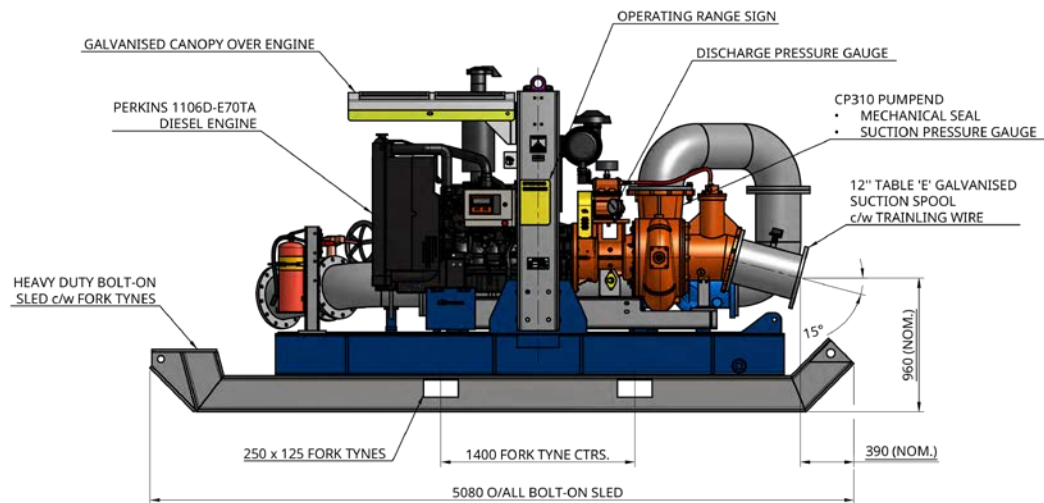
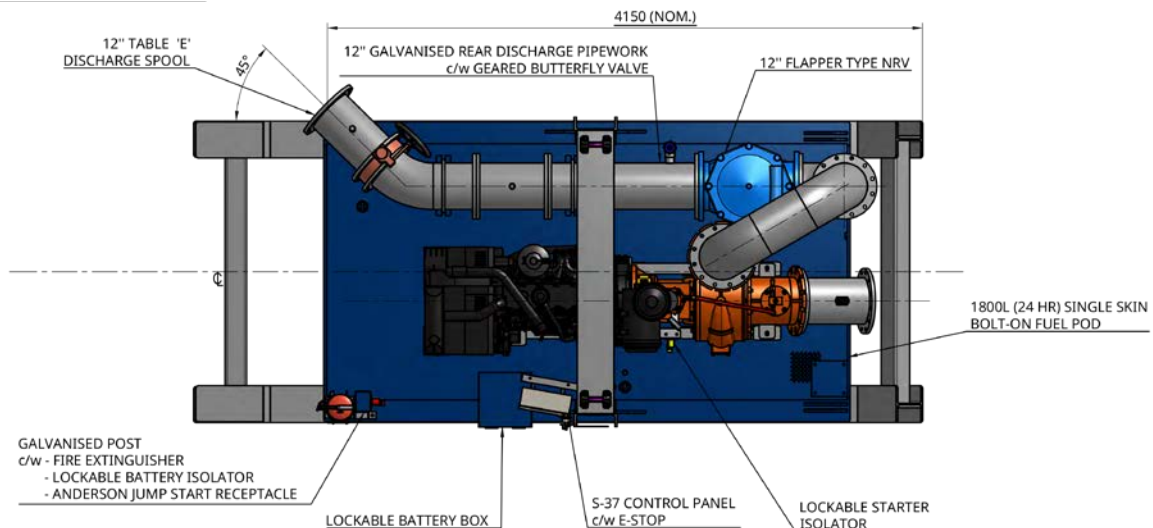
OPTIONAL EXTRAS

Please contact us to discuss these options:

- Additional operational, mobility and safety extras such as: suction and discharge couplings, strainers, double skin fuel tanks and trailers. These can all be selected and fitted to our Premium Range (PR) pump units.
- Our PR build configuration uses CAT diesel engines, however, alternative engine brands are available upon request.
- Other pump materials of construction are also available upon request: full 316 stainless steel, CD4MCU, chromium steel, SAF 2205 and SAF 2507.



TECHNICAL DATA



DRY: 6,200kg [13,669 lb]

WET: 7,750kg [17,086 lb]

Note: Final weight and dimensions will depend on completed specifications and options, subject to manufacturing tolerances. All the information in this document is substantially correct at the time of creation and may be altered at the manufacturer's sole discretion. Any quotes and related material provided supersedes the contents hereof.

Copyright © 2023, 2024, 2025 Sykes Group Pty Ltd. All rights reserved. Sykes is a trademark and or registered trademark of Sykes Group Pty Ltd.

Part of Atlas Copco Group

www.sykesgroup.com