



SYKES

PUMP SPECIFICATION SHEET

► SW310-380-AR —



Built Tough

SEWAGE & WASTE AR



Sewage &
Waste Water



Construction
& Civil



Mining &
Quarries



Rental



Industrial



Oil & Gas

► HEAVY DUTY

Automatic self-priming
single stage end
suction pump

► SOLIDS HANDLING

Large solids capacity
while maintaining
hydraulic efficiencies

► CORROSION RESISTANT

Stainless steel 316
(CF8M) internals
as standard

TECHNICAL DATA

DESIGN DETAILS

Auto self-priming, centrifugal single stage, end-suction, 3 vane semi open impeller.

PRODUCT SPECIFICATIONS

Suction Flange	300mm [12"]
Delivery Flange	300mm [12"]
Solids Handling	110mm [4.33"]
Maximum Head	57m [187ft]
Maximum Flow	440L/sec [6,974 USgal/min]
Engine Type	Perkins 1106D-E70TA
Engine Adaptor	SAE #2
Shaft Diameter*	68mm [2.68"]
Fuel Rate @ BEP 1,600rpm**	43.9L/hr [11.60 USgal/hr]
Fuel Tank Capacity	1,200L [317 USgal]
Acoustic Performance***	70dBa @ 7m @ 1800 RPM

* The nominated shaft diameter is the critical working diameter of the shaft, used for calculation of the shaft stiffness ratio L3/D4.

** Based on standard engine brake specific fuel consumption.

*** Average measurement over 30 seconds in an open, non reflective environment.

ACOUSTIC RANGE (AR) INCLUSIONS

- Acoustic canopy for quiet operation, lined with water-resistant and fire-retardant acoustic foam, and complete with an externally mounted emergency stop button.
- Manual diesel fuel fill (lockable).
- Pump and engine control panel with emergency stop as standard.
- Heavy duty battery.
- Externally accessible control panel, Vacuum (suction inlet) and Pressure (discharge outlet) gauges.
- Pump operating range sign for optimum pump life and reliability.
- Recessed fire extinguisher pocket
- Optional galvanised stackable exoskeleton, allows stacking of two units. Frame is removed when mounting pumpset on trailer.

MATERIALS OF CONSTRUCTION

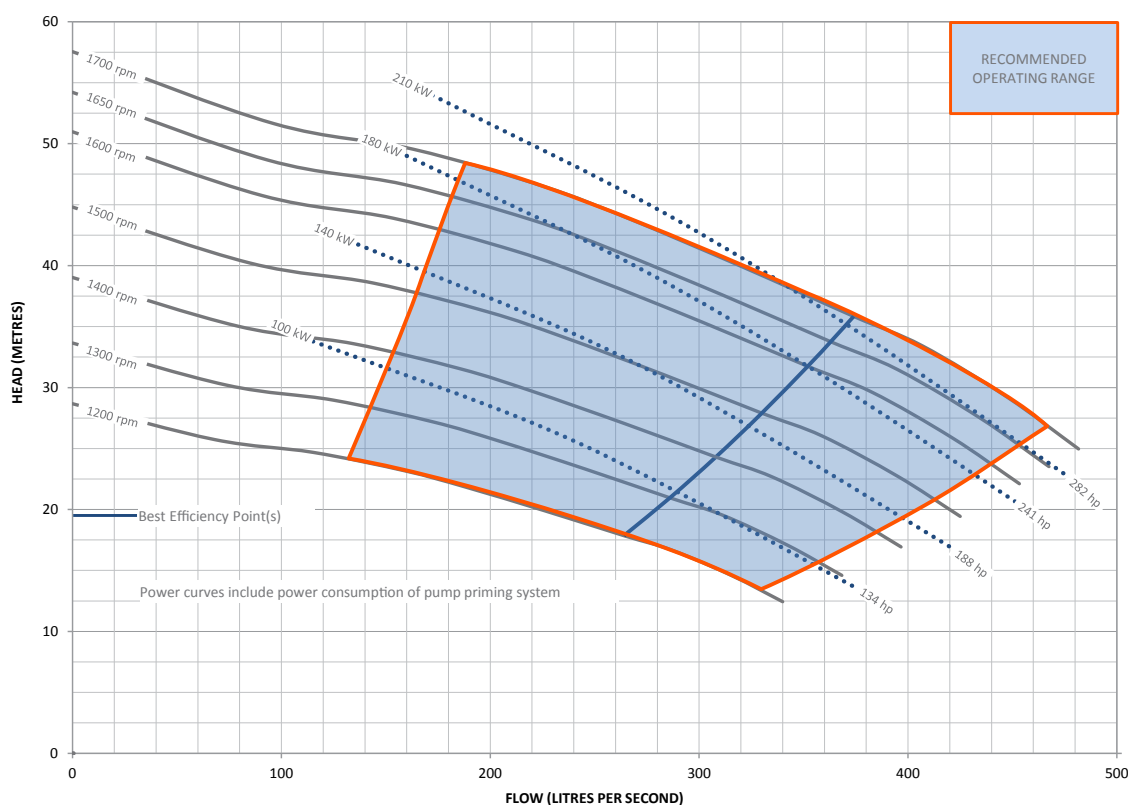
PART	MATERIAL	MATERIAL STANDARDS			
		GRADE	AS	GRADE	ASTM
Tee Piece	SG Iron	400/12	1831	65-45-12	A536
Front Adaptor Plate	SG Iron	400/12	1831	65-45-12	A536
Pump Casing (Volute)	SG Iron	400/12	1831	65-45-12	A536
Front Wear Plate	Stainless	316/H6B	2074	CF8M	A351
Impeller	Stainless	316/H6B	2074	CF8M	A351
Rear Wear Plate	Stainless	316/H6B	2074	CF8M	A351
Rear Adaptor Plate	SG Iron	400/12	1831	65-45-12	A536
Pump Shaft	Stainless	431	2074	98b-431	A276
Bearing Bracket	SG Iron	400/12	1831	65-45-12	A536
Bearing Covers	SG Iron	400/12	1831	65-45-12	A536
Mechanical Seal†	Multi-spring balanced cartridge type				

† Multi-spring balanced double hard faced cartridge type mechanical seal complete with oil lubrication and pumping ring. Seal faces are silicon carbide vs. tungsten carbide

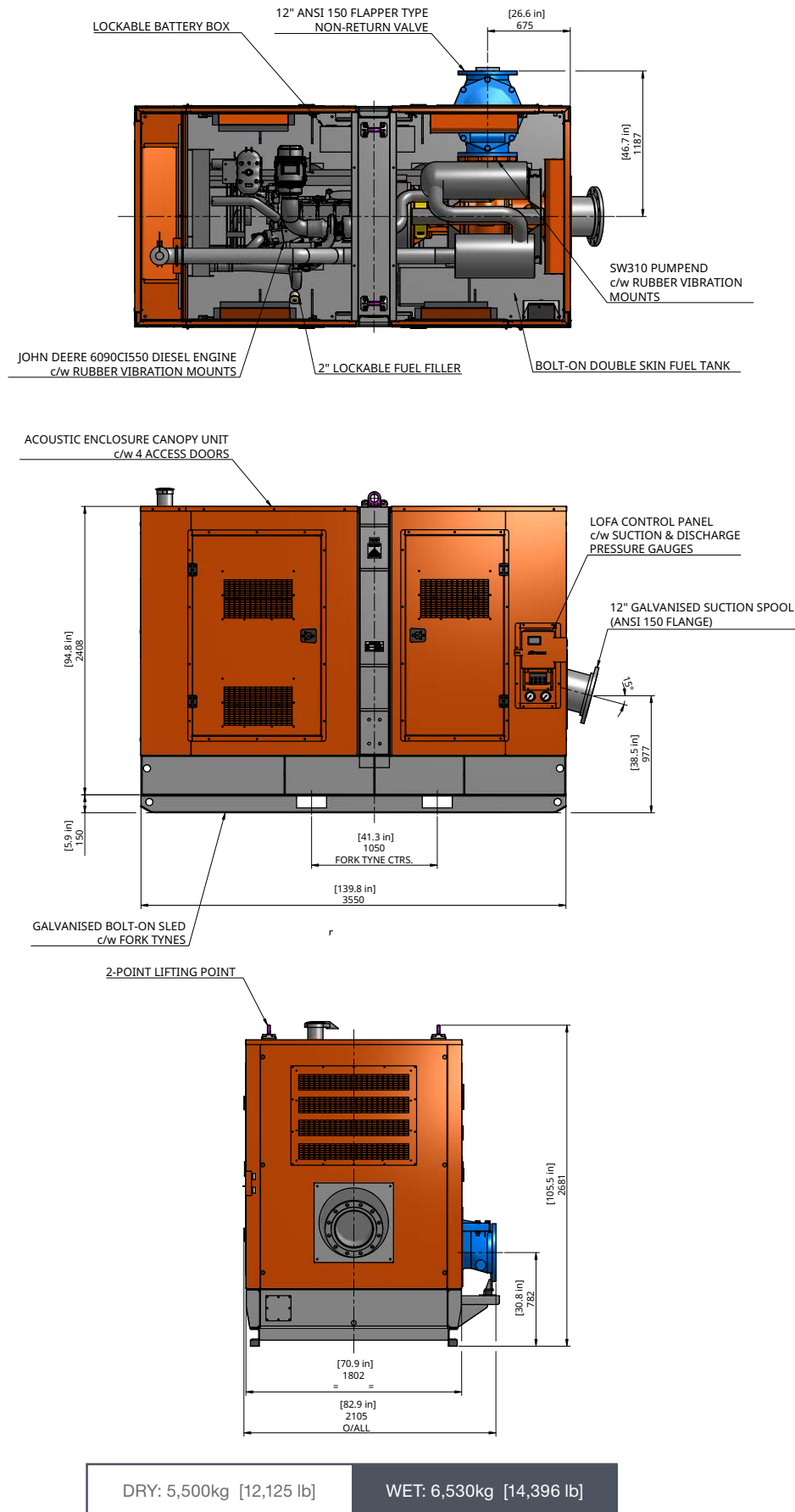
OPTIONAL EXTRAS

Please contact us to discuss these options:

- Additional operational, mobility and safety extras such as: suction and discharge couplings, strainers, battery isolators, sleds and trailers. These can all be selected and fitted to our Acoustic Range (AR) pump units.
- Our AR build configuration uses Perkins diesel engines, however, alternative engine brands are available upon request.
- Other pump materials of construction are also available upon request: full 316 stainless steel, CD4MCU, chromium steel, SAF 2205 and SAF 2507.



TECHNICAL DATA



TRAILER MOUNTING DETAILS
AVAILABLE UPON REQUEST

Note: Final weight and dimensions will depend on completed specifications and options, subject to manufacturing tolerances. All the information in this document is substantially correct at the time of creation and may be altered at the manufacturer's sole discretion. Any quotes and related material provided supersedes the contents hereof.

Copyright © 2023, 2025 Sykes Group Pty Ltd. All rights reserved. Sykes is a trademark and or registered trademark of Sykes Group Pty Ltd.

■ Part of Atlas Copco Group

www.sykesgroup.com