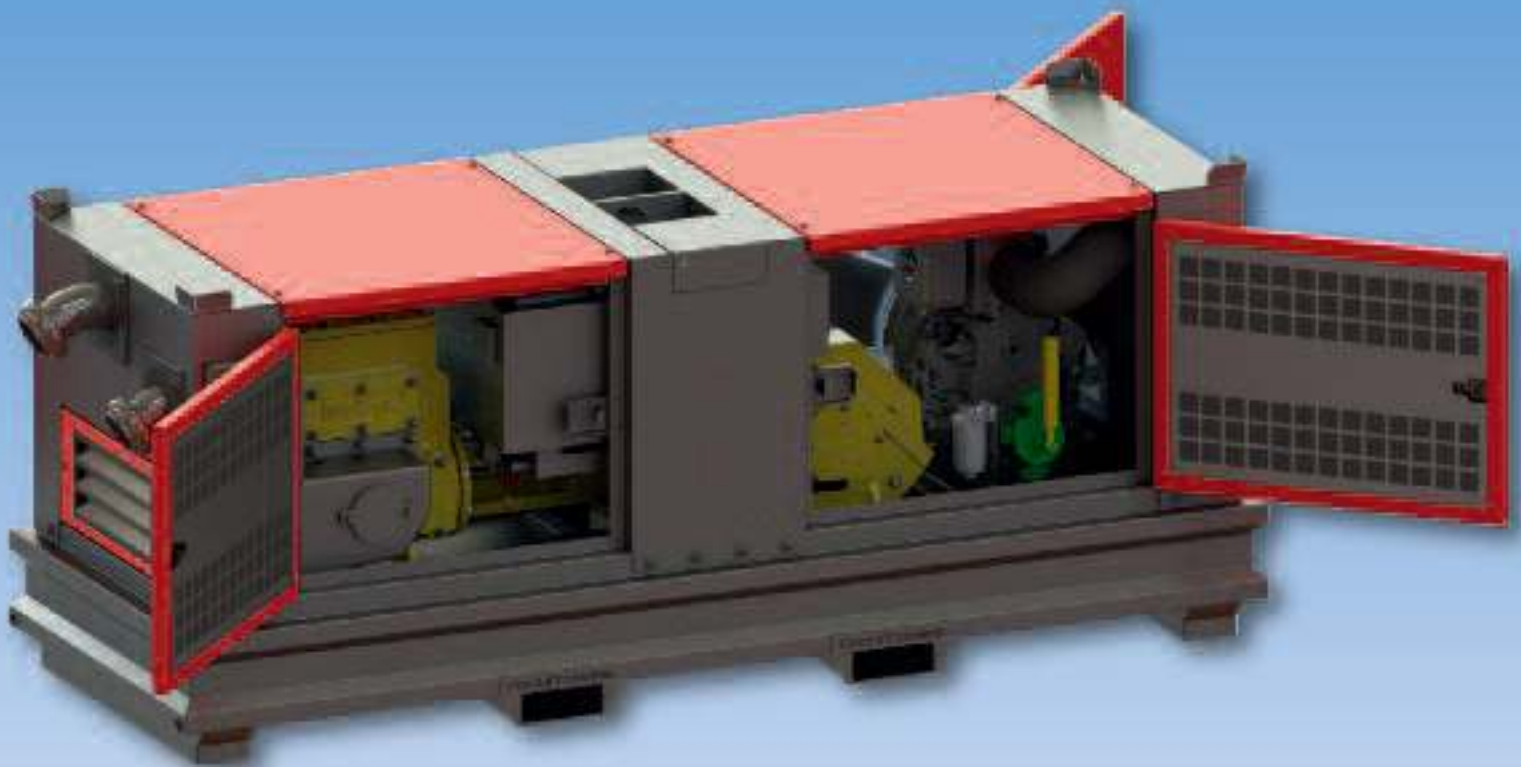
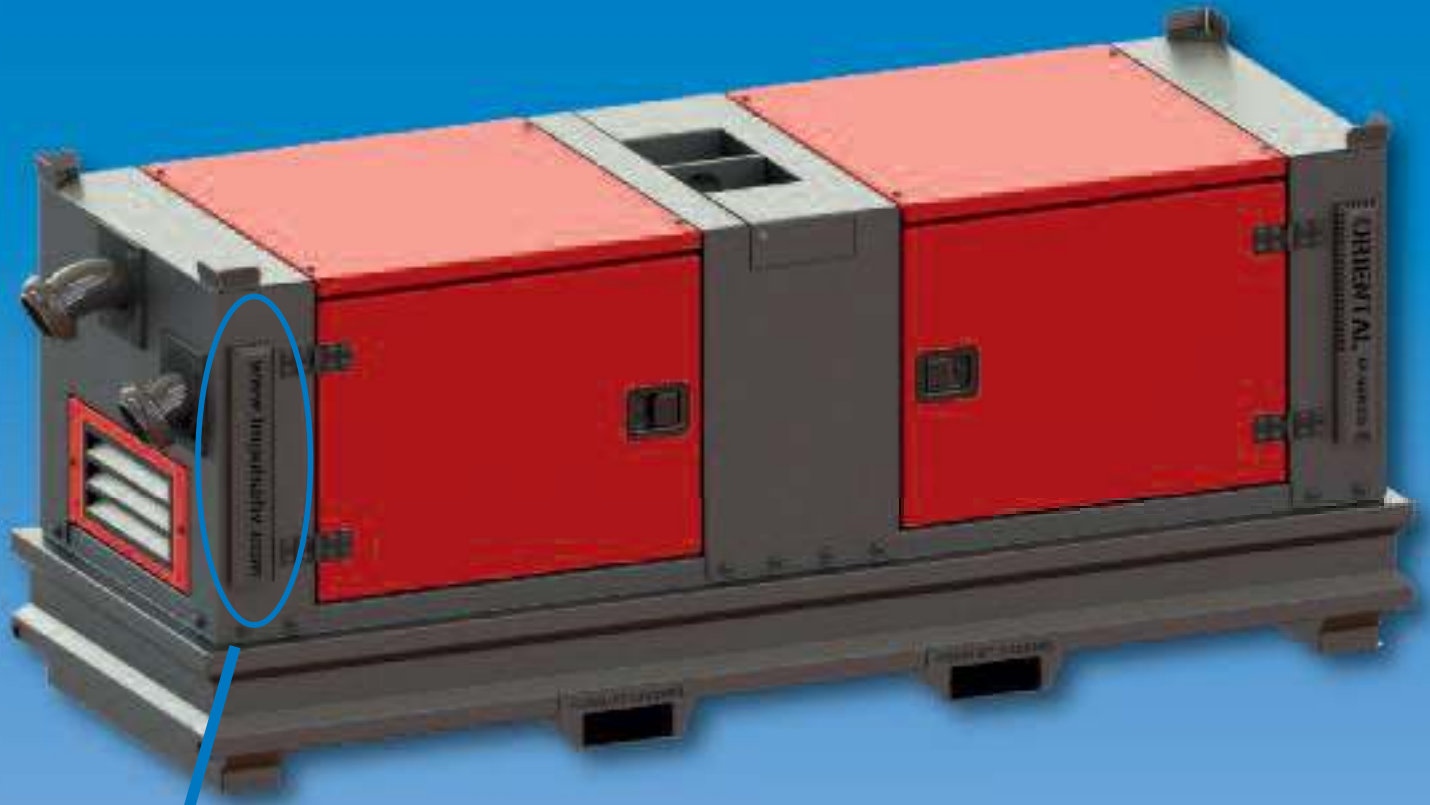




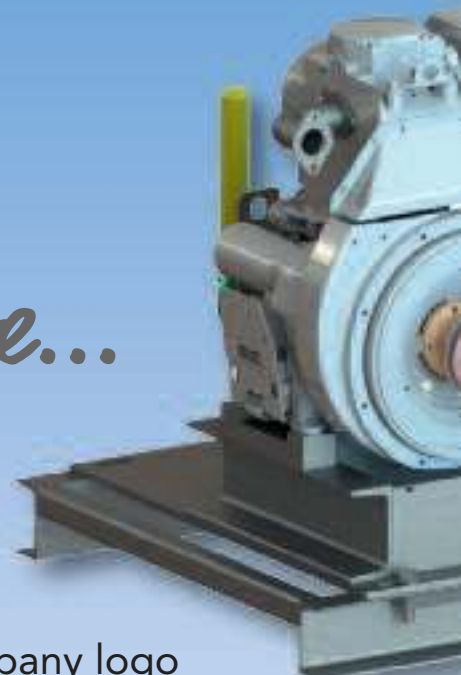
ORIENTAL III - Series



Impossible to live without water...



*If you are not sure...
Diesel or Electric drive...*



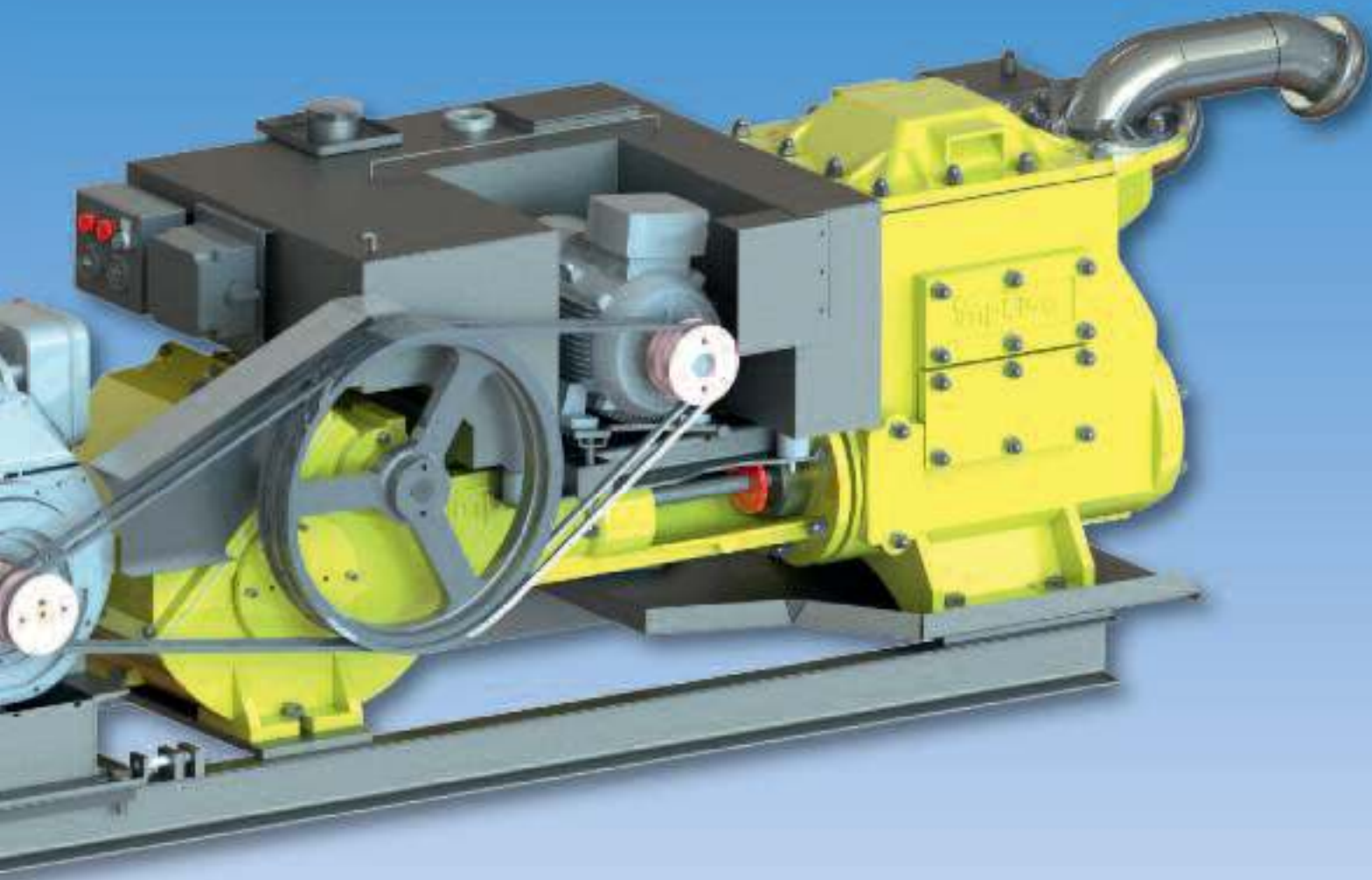
Options:

- Protection bars on canopy with own company logo
- Panels painted in any single (company) RAL colour.
- Electric / Diesel COMBI pump configuration
- Auto start diesel when power fails on electric drive*
*(under development)



Main specifications (standard diesel unit):

Dimensions (LxWxH)	: 275 x 105 x 115 cm
Weight	: 2.150 kg
Fuel tank	: 230 liter
Max capacity	: 90m ³ /h
Engine	: Hatz 1D81Z diesel engine
Fuel consumption	: 0.8liter / hour



Pump Performance:

	IP-145	IP-160	IP-175	
Cylinder diameter	145	160	175	mm.
Engine power	7.5	5.5	7.5	Kw
Capacity	48	60	90	m ³ /h
Head	65	26	22	mwc.
Vacuum	9.5	9,5	9.5	mtr.

Impossible to live without water...



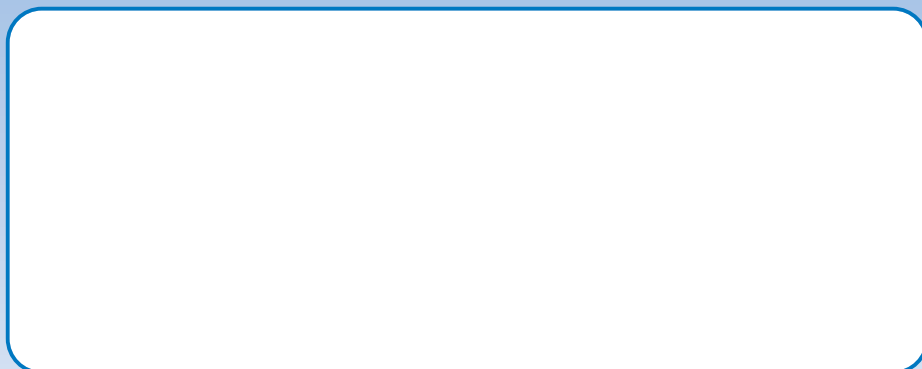
...makes you stronger tomorrow.

All Impulse pumps are powered by:



Power and productivity
for a better world™

Supplied by:



Impulse Pumps BV Arendsenweg 9 7021 PC Zelhem The Netherlands
Tel. +31 (0) 314 64 12 88 info@impulsebv.com www.impulsebv.com

Impulse "Oriëntal" pump set

Type: IP-145/IP-160/IP-175
Hatz diesel driven piston pump



	IP-145	IP-160	IP-175
Cylinder diameter	: 145 mm	160 mm	175 mm
Measured power	: 7,5 kW	5,5 kW	7,5 kW
Max capacity	: 54 m3/h	65 m3/h	95 m3/h
Max head	: 65 mwc.	26 mwc.	20 mwc.
Max vacuum	: -9,4 mtr.	-9,4 mtr.	-9,4 mtr.
Pump weight	: 825 kg.	825 kg.	825 kg.
Efficiency	: 92%	92%	92%

Specifications Oriëntal series

L x W x H	: 275 x 95 x 120 cm
Weight	: 2215 kg
Fuel tank	: 185 litres (10 to 14 days of continuous running)
Standard accessories	: Forklift channels under base
	: Central lifting eye
	: Connections suction and discharge (system Cardan or Bauer on request)
	: Oil retap pump for dieselengine and pump gearbox
	: Safety starting handle, for manual start of dieselengine
	: Galvanized protection bars on long side of canopy

Specifications Hatz 1 D81 Z diesel engine

Start	: 12V Electric start with hour counter
Cylinder	: 1 cylinder
Bore x stroke	: 100 x 85 mm
Power (according DIN ISO 3046)	: 5,5 kW
Cylinder capacity	: 667 cc
Compression-ratio	: 20.5
Fuel usage (on full duty)	: 1,09 liter/hour
Average fuel usage	: 0,82 liter/hour
Carter volume	: 4,8 liter motoroil 15W40
Weight engine	: 88,6 kg.



General

The Impulse IP reciprocated piston pump is developed for groundwater control and temporary groundwater abstraction and can be de clean water pump.

This “clean water pump” can only be used in combination with well points with a maximal perforation of 0,7mm, or a horizontal drain pipe (French drain) which is connected to the suction of the pump.

The construction of the pump characterizes itself by a relatively low rpm (max 380 rpm of the big flywheel) combined with a high vacuum.

The construction is simple and solid and requires few to no maintenance.

The Impulse IP piston pump is standard driven by a Hatz Diesel engine or an electric ABB engine. Other engines are on request available.



The Oriëntal series

The canopy of the Oriëntal pump is made of galvanized plate material and is placed on a fully sunk under base. The fuel tank is placed above the pump.

The sub frame is placed on vibration dampers in the base tray on which the pump and the diesel engine are mounted.

The diesel engine is mounted on an engine base plate and is placed behind the pump. The V-belt tension construction is equipped with push- and pull function. The exhaust and hot air drain damper are integrated to the back panel of the canopy.

The diesel engine contains a 12V electric starter and a safety starting handle, for a manual start of the diesel engine.

The engine configuration has a separate fuel filter with water separator, hour counter, mechanical oil pressure safeguard, enlarged carter and a hot air drain tunnel.

By stopping the diesel engine there will ring a buzzer as a reminder for switching the ignition off.

The canopy contains 4 articulated door panels of which 3 are fitted with stainless steel locks.

The door panel on the pulley side of the pump is locked by two M10 bolts. (according safety precautions)

The door panels contain sound muting isolation and are finished by perforated protection plates, for an optimal sound protection.

The entire canopy is coated with a zinc primer (inner and outer side) and the inner side is lacquered with a greyscale (RAL 7010).

The outer side can be coated in a single RAL colour.

The sound level on 10 metres of the pump set is 49 dB (while running).